



Series 1504

Inflow Cabinet

Features

- ❖ Open front hood
- ❖ 99.99% HEPA filtered exhaust
- ❖ 150 LFPM inflow velocity
- ❖ Customized options available
- ❖ All-metal construction
- ❖ Each-change prefilters

Series 1504 Inflow Cabinet

Standard

1. Exhaust grille
2. HEPA filter
3. Power cord
4. Blower/motor
5. Light receptacle
6. Blower on/off switch
7. Circuit breaker
8. Prefilter
9. Plexiglass hood
10. Formica table top

Options

11. Fluorescent light
12. Stainless steel support frame
13. Leg leveling glides
14. Cabinet constructed of white vinyl covered steel
15. Light switch

Options Not Shown

- Stainless steel table top
- Stainless steel shell
- Stainless steel hood
- Stainless steel sink
- Gooseneck

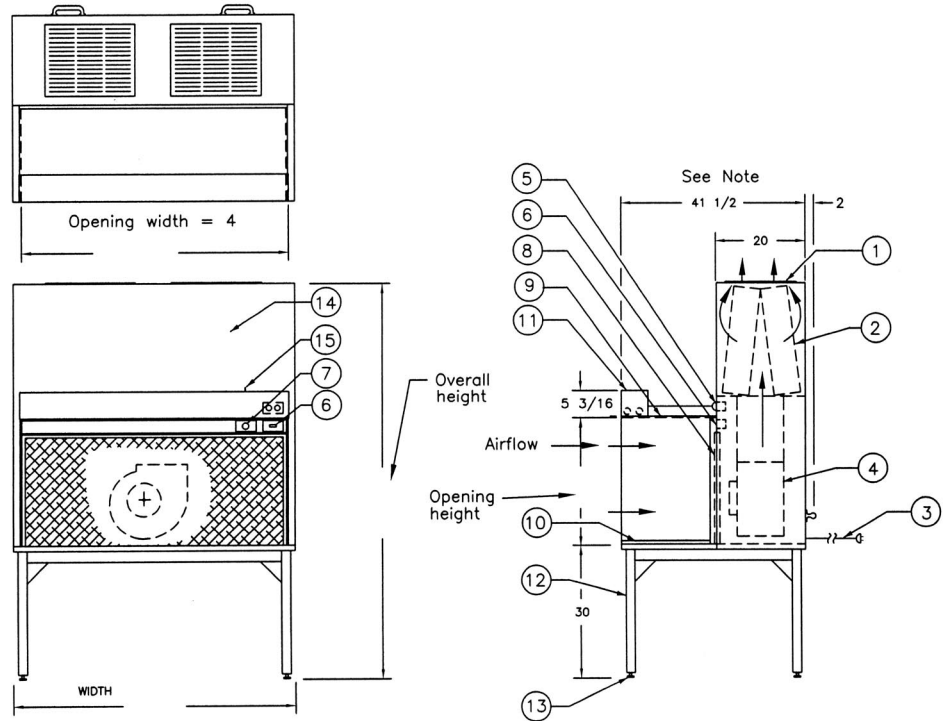
Additional options upon request, i.e. different table and hood depths.

Note: The unit can be shipped with the support stand on or off. It can also be made with a removable hood and table top to go thru a standard 36 inch door.

Standard Sizes

	Width	Opening Height	Overall Height
3 ft.	38-1/2 in.	25 in.**	89 in.
4 ft.	50-1/2 in.	28-1/2 in.	92-1/2 in.
5 ft.	62-1/2 in.	36 in.	100 in.
6 ft.	74-1/2 in.		
8 ft.	98-1/2 in.		

**Blower on/off switch located above hood or remote-mounted below table top.



Specifications subject to change. Please contact factory for details.